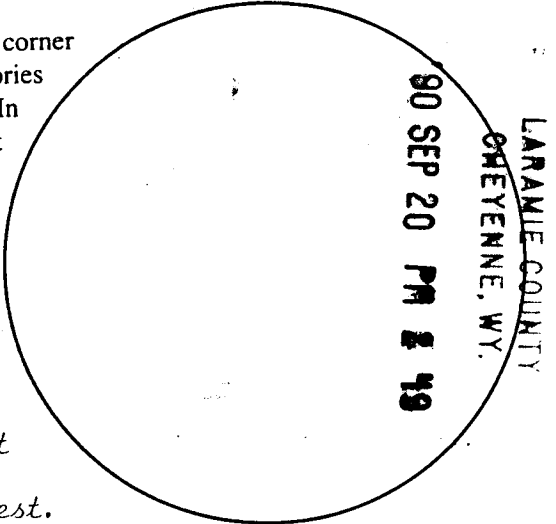


Wyoming Certified Land Corner Recordation Certificate

This form is to be completed in accordance with W.S. 36-11-101, printed in black ink or typed, and shall be for one individual corner.

Describe below, or show in sketch attached to this form, the corner evidence found. Include condition and type of monument, accessories and ties. Describe any maintenance or rehabilitation performed. In the circle to the right, show monument inscription. If monument is determined lost or obliterated, restate the GLO or BLM original field note record; describe or show the procedure used to reestablish the corner and all data as above for a found monument.



075205

Field Date 3/22/89 Office Reference S02-314E0988

ORIGINAL: From this corner of Townships 13 & 14 in Ranges 66 & 67 West, I run South 89°57' West in true line along the south boundary of Section 36 in Township 14 North, Range 67 West. 40.00 chains set a granite boulder 16 X 10 X 8 for 1/4 section corner.

Monument Inscription

FOUND: 5/8" re-bar called for on the "Westland Subdivision" plat and the "Cook Addition" plat. We very closely matched the distances shown on these maps for ties to the Southeast and the Southwest corners of Section, within 0.08 foot to Southeast corner and 0.20 foot to the Southwest corner.

State of Wyoming

Office of County Clerk

County of _____

This Certified Land Corner Recordation Certificate was filed for record on the _____ day of _____, 19 ____, in Book No. T 14, R 67, on Alpha-Numeric coordinates 223 and was noted on the Cross Index Plat.

Janet C. Whitehead
County Clerk

Corner Type:

Aliquot Corner

Other

Section(s) 36

Meridian 6th Principal

Corner Name South Quarter

Township 14

Range 67

Page _____

Sheet 1 of 2

BOOK 1292

932

**Directions for using the
Cross Index Plat**

Section, quarter and sixteenth corners will be marked with a dot at the corner location. The alpha-numeric coordinate number is then determined for the intersection of the two lines. A corner that applies to two or more townships shall be filed under all that apply by the use of photo copies.

Closing corners will be indexed under the township in which they control ownership. For 1/64, 1/256, 1/1024 and non-aliquot corners lying between grid designations, mark the appropriate grid area with a dot and use the index code to the north and west (local systems may be used if the method is approved by the County Surveyor or Clerk and a written description of its use is filed in the front of each book of certificates).

Cross Index Plat

	1	2	3	4	5	6	7	8	9	10	11	12	13	14	15	16	17	18	19	20	21	22	23	24	25		
A																											A
B																											B
C			6																								C
D																											D
E																											E
F																											F
G																											G
H																											H
J																											J
K																											K
L																											L
M																											M
N																											N
O																											O
P																											P
Q																											Q
R																											R
S																											S
T																											T
U																											U
V																											V
W																											W
X																											X
Y																											Y
Z																											Z
	1	2	3	4	5	6	7	8	9	10	11	12	13	14	15	16	17	18	19	20	21	22	23	24	25		

State Plane Coordinates (optional)

Zone W WC EC E feet/meters

NAD 1927 NGVD 1929 NAD 1983 NAVD 1988

North (Y) = 169,560.20 East (X) = 590,799.45 EL = _____

Latitude _____ Longitude _____

Scale Factor _____ Geoid Height _____

Coordinates shown hereon are State Plane-Surface coordinates based on Wyoming Highway Department Control.

Certification

I, Robert W. Taylor, Wyoming PLS- #3891 certify that I, or others under my supervision, have performed the work as described above and completed this form.

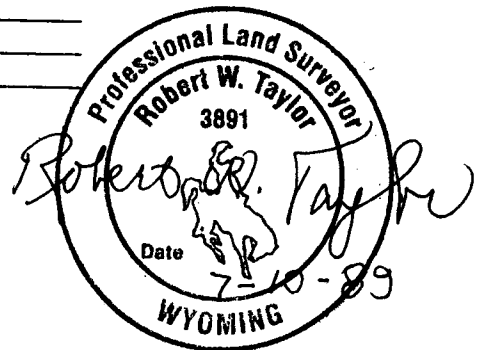
Company or Agency Eastern Wyoming Engineering & Surveying Professionals

Mailing Address P.O. Box 99

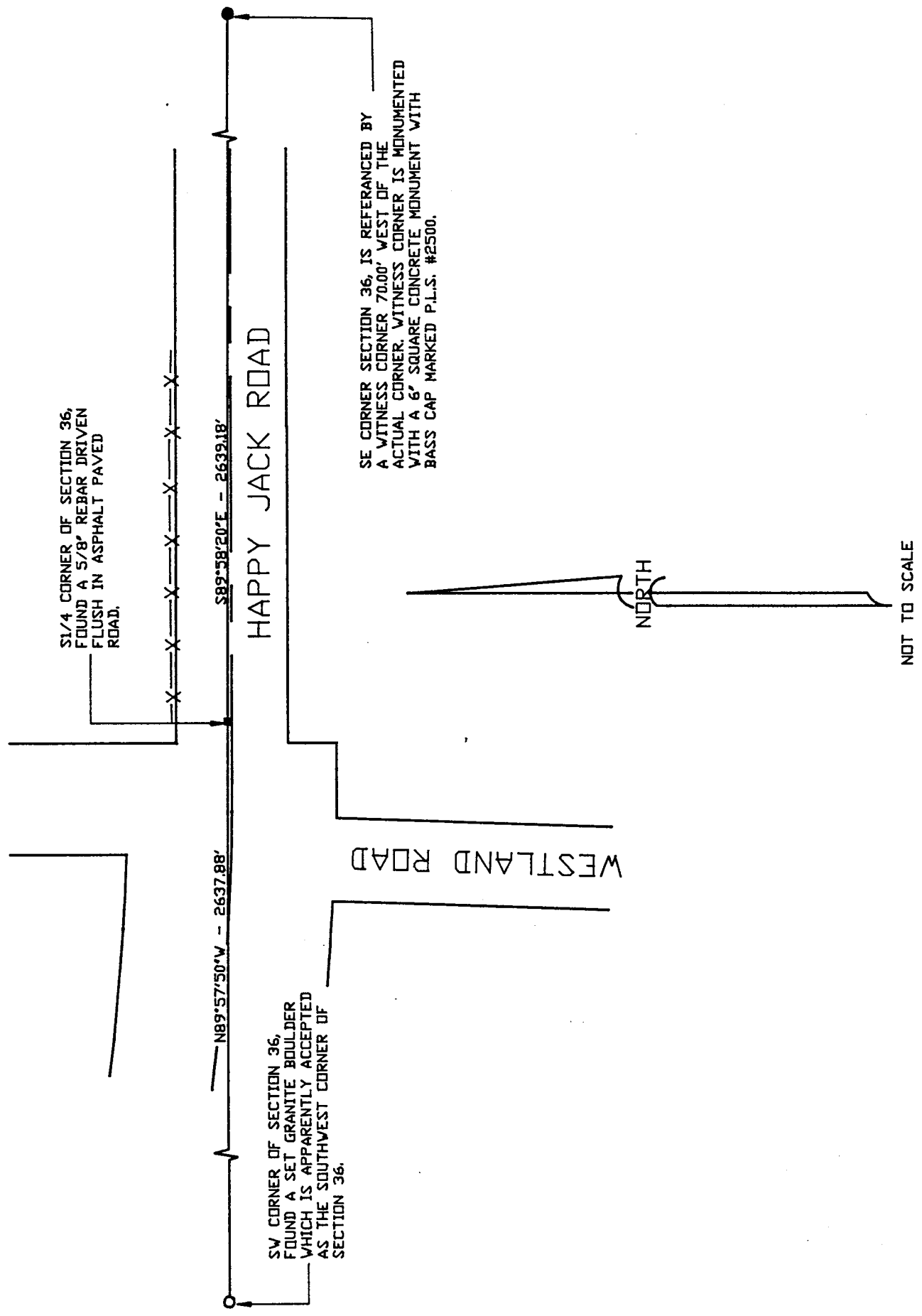
Street Address 2510 West C

City, State, ZIP Torrington, WY 82240

Telephone, FAX 307-532-3811 FAX 532-4868



Signature, Seal, and Date



SW CORNER OF SECTION 36,
FOUND A 5/8" REBAR DRIVEN
FLUSH IN ASPHALT PAVED
ROAD.

SW CORNER OF SECTION 36,
FOUND A SET GRANITE BOULDER
WHICH IS APPARENTLY ACCEPTED
AS THE SOUTHWEST CORNER OF
SECTION 36.

SE CORNER SECTION 36, IS REFERENCED BY
A WITNESS CORNER 70.00' WEST OF THE
ACTUAL CORNER. WITNESS CORNER IS MONUMENTED
WITH A 6" SQUARE CONCRETE MONUMENT WITH
BASS CAP MARKED P.L.S. #2500.

HAPPY JACK ROAD

WESTLAND ROAD

NORTH

NOT TO SCALE

